

# FNP License Renewal

## Subtopics

1. [User profile](#)
2. [Entitlements](#)
3. [Renewing your licenses](#)
4. [Downloading licenses](#)
5. [Viewing license information and reporting](#)
6. [Managing entitlement and license server aliases](#)
7. [Downloading the data for license comparison](#)
8. [License Renewal Comparison Tool](#)

- [FNP License Renewal](#)
- [User profile](#)
- [Entitlements](#)
- [Renewing your licenses](#)
- [Downloading licenses](#)
- [Viewing license information and reporting](#)
- [Managing entitlement and license server aliases](#)
- [Downloading the data for license comparison](#)
- [License Renewal Comparison Tool](#)
  - [Installing and updating the Comparison Tool](#)
  - [Executing a comparison](#)
  - [Managing files to compare](#)
  - [How to proceed in case of discrepancies](#)
  - [getOrderNumbers tool](#)

# FNP License Renewal

Advantest licenses are purchased on a perpetual basis. However, you must physically renew your FlexNet (FNP) license keys on an annual basis using the web-based Advantest License Renewal Portal. All FNP perpetual licenses expire on 31st March the following year.

Note: FlexNet Embedded licensing (FNE) does not require annual license key renewal. If you want to simplify your license management, consider migrating to FNE licensing. If you choose to migrate from FNP licensing to FNE licensing, existing FNP perpetual licenses are converted to FNE permanent licenses. For more details, contact your Advantest representative.

During the month of March of the year following your initial license activation, you must renew FNP licenses. You will also need to repeat the license renewal during March in each subsequent year.

To assign an entitlement and initiate the license renewal process, you need the Entitlement ID, which is stated on your entitlement certificate accompanying each purchase. If you lose or misplace an entitlement certificate, contact your Advantest sales representative for a replacement copy.

**ADVANTEST**

Entitlement ID: 0203019644\_010\_6

**Software/Hardware Feature  
ENTITLEMENT CERTIFICATE**

Advantest Corporation grants

**Advantest License Consignment to** \_\_\_\_\_

the right to activate the following quantities of the product(s) below:

Product	Description	Quantity	Validity
N8008X-AM-EXA-BASE	AssetScale Token for AMD, AMD-EXA base config (P55000 system token, 533Mbps, 224MB, 768ch), perpetual floating per system license	1	Mar 31, 2999
N8008X-AM-EXA-PS5U	Asset Scale Padlock-3X Token for AMD, P55000 speed and memory upgrade 533Mbps, 224MB, per board, InstaPin DSL license (FNE only)	6	Mar 31, 2999
N8008X-AM-EXA-XPSU	Asset Scale Padlock-3X Token for AMD, XPS256 feature upgrade (PMON, HA), per board, InstaPin DSL license (FNE only)	1	Mar 31, 2999
N8008X-AM-EXA-PHY	Asset Scale Padlock-3X Token for AMD, P55000 PHY upgrade, per board, InstaPin DSL license (FNE only)	1	Mar 31, 2999

**NOTICE:** Advantest software products require a FlexNet license in order to run. Advantest Tester hardware features require a FlexNet license file containing specific feature licenses for the software or hardware to function. You must activate the FlexNet licenses for the product(s) listed above from Advantest Corporation by visiting the Advantest License Portal at: <https://license.advantest.com/>

To access and use the Advantest License Portal, a User account is required. Advantest will create the Advantest License Portal account for each User free of charge. User access details will be provided to the User following successful registration.

The Entitlement ID (above) will be required for activation. You will also need the Host ID and the Host Name of the computer these licenses will be associated with. If you cannot access the world wide web, or have questions about this form, contact your local Advantest sales office.

# User profile

After signing in to the Advantest Licensing Renewal Portal, you can access the User profile page, which displays information about your Advantest License Renewal account.

## About this task

You can display the following information about your Advantest License Renewal account:

- User name
- Email address associated with your Advantest License Renewal account
- Roles assigned to you and their associated organizations

## Before you begin

Sign in to the Advantest License Renewal Portal.

## Procedure

To display information about your Advantest License Renewal account, click your user name at the upper-right of the License Renewal Portal.

# Entitlements

## Subtopics

1. [Assigning an entitlement](#)
2. [Removing an entitlement assignment](#)

While your company can hold several entitlements, acquired with different purchases, only a subset of those entitlements may be assigned to your user account. To see your assigned entitlements, sign in to your user account at the Advantest Renewal Portal and click the Assign Entitlements link.

An entitlement assigned to you can also be co-assigned to other user accounts, for example, to a general company user account. A hover text (see below) displays the name of all additional user accounts which have that entitlement co-assigned. If an entitlement is assigned to more than one user account, other users can also view and renew the licenses of that entitlement.

**Note:** If your company has several users managing entitlements, for example, for different sites, you must make a strategic decision on the internal ownership of entitlements.

To avoid later conflicts, the internal ownership for the entitlements must be clear before starting to assign entitlement certificates.

When the ownership changes, due to system movement or other reasons, make sure the change is also reflected in the entitlement assignment on the renewal portal.

The entitlement ID is the key to all assignments and license renewal activities. Entitlement IDs are case sensitive. To assign an entitlement to your user account, you must be able to identify the entitlement that you want to assign, either from the ID or the alias. The first part of the entitlement ID (before `_OID_`), which is typically the Advantest order number, is usually sufficient to identify and select an entitlement and move it to the "My assigned entitlements" table.

## Example

## Assign entitlements

On this page you can assign entitlements to your user account. Please note that you can only renew / view licenses for entitlements which are assigned to you!

Icon help:

- The entitlement has activatable items.
- The entitlement does not have any activatable item.
- The entitlement is assigned to other user(s). A tooltip lists all user names.
- The entitlement does not belong to one of the user's organizations.
- The entitlement is not assigned to any customer.

### My assigned entitlements

Select all Unselect all Add new entitlement ID...

Entitlement ID
2233445566_OID_16aa-8e53-15bc68c7-7445-35
Assigned to 1 other user(s): <b>John.smith@example.com</b>

Select all Unselect all Add new entitlement ID...

### Available entitlements

Select all Unselect all

Entitlement ID	
Enter filter criteria and press return	
2233446677_OID_44de-38c4-13e4-1abc-2726-a1a	Electronic Instruments Co., Ltd (12345)
<input checked="" type="checkbox"/> 2233446688_OID_44de-38c4-13e4-1abc-2741-b2b	Scientific Instruments Corp (12346)
2233446699_OID_44de-38c4-13e4-1abc-2751-c3c	Electronic Instruments Co., Ltd (12345)
2233446700_OID_44de-38c4-13e4-1abc-2756-d4d	Electronic Instruments Co., Ltd (12345)
2233446711_OID_44de-38c4-13e4-1abc-2771-e5e	Scientific Instruments Corp (12346)
2233446722_OID_44de-38c4-13e4-1abc-2783-f6f	Scientific Instruments Corp (12346)

Select all Unselect all

© 2014 ADVANTEST CORPORATION - V2.0.2/LRPA-LRPCI-RELEASE#305

The Assign entitlement page is divided into two lists of entitlements.

Displays a list of entitlements that are assigned to you.

## Available entitlements

Displays a list of entitlements that are available but not assigned to you.

The entitlements listed in the table on the right have been purchased by your legal entity.

You can use these lists to:


- Check whether entitlements booked under your legal entity are appropriately assigned to your user account.
- Assign and remove entitlements to and from your user account.


The Assign entitlements page also provides additional information about the entitlements:

- The entitlement has activatable items.

- The entitlement does not have any activatable item. These entitlements do not need to be renewed.

 - The entitlement is assigned to other users. A tooltip lists all user names.

 - The entitlement does not belong to any of your assigned organizations (legal entities).

 - The entitlement is not assigned to any customer. Typically all entitlements should be assigned to a customer.

---

# Assigning an entitlement

When an entitlement is assigned to your user account, you get the rights of that entitlement, with all its licenses.

## About this task

Note: The main prerequisite for all renewal activities is that you have assigned the appropriate entitlement IDs to your user account.

Entitlements are identified using entitlement IDs. You find the entitlement ID in the upper-right corner of the entitlement certificate that accompanies each purchase.



CAUTION: The entitlement ID is the security key to your licenses. Do not make the entitlement ID public. If other users have the entitlement ID, they can assign it to their account and assume ownership of the license.


To assign an entitlement to your user account, complete the following procedure.

## Before you begin

- Make sure that you know which entitlement ID you want to assign to yourself.
  - Sign in to the Advantest License Renewal Portal.
-

Note: Entitlement IDs are case sensitive.

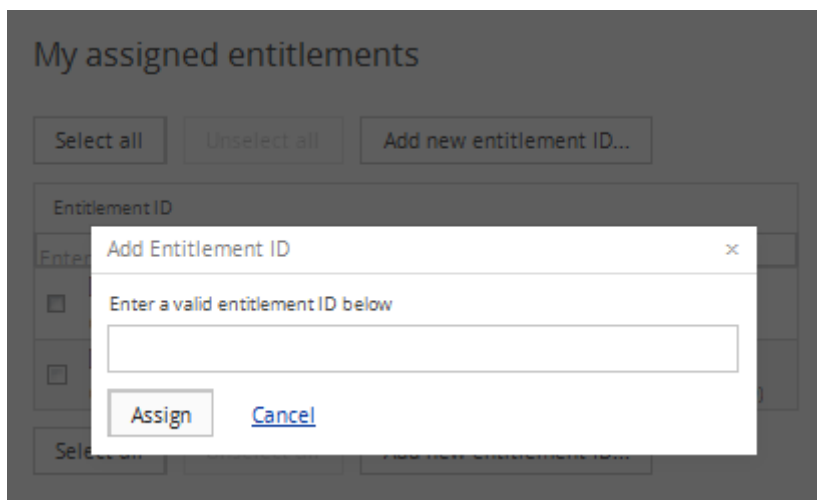
## Procedure

1. In the **Advantest Renewal Portal** start page, select the **Assign entitlements** tab.  
The Assign Entitlement page opens.
2. From the **Available entitlements** list, select the entitlements that you want to assign to yourself.  
You can also use the **Select all** and **Unselect all** buttons to simplify selection.
3. Click **Assign**.  
The list on the left shows those entitlements you assigned to your user account. The list also shows whether an entitlement is assigned to you only, or to others as well. In this case the  icon is displayed. Hover text displays the names of the other users.

## Results

The selected entitlements are now assigned to your user account and appear in the list on the left.

If you have the complete entitlement ID, you can assign an entitlement that belongs to another legal entity, for example, licenses for systems leased from a leasing company, to your user account using the **Add new entitlement ID** button. This entitlement appears in the Assigned Entitlements list on the left, but not in the list on the right.



---

## Removing an entitlement assignment

When you remove an entitlement assignment, it is no longer assigned to your user account. You will not be able to retrieve or renew the licenses of this entitlement, or view its renewal status.

## About this task

You may need to do this if somebody else has since been assigned as the entitlement owner, for example, when a system is moved to another site.

To unassign an entitlement from your user account, complete the following procedure.

## Before you begin

Before you remove an entitlement ID, make sure you do not need to access the entitlement in the future.

## Procedure

1. In the **Advantest Renewal Portal** start page, select the **Assign entitlements** tab.  
The Assign Entitlement page opens.
2. From the **My assigned entitlements** list, select the entitlements that you want to unassign from your account.  
You can also use the **Select all** and **Unselect all** buttons to simplify selection.
3. Click **Unassign**.

## Results

The specified entitlements are no longer assigned to your user account and removed from the list on the left.

# Renewing your licenses

Renewing your licenses enables to keep using them.

## About this task

A license is based on several parameters:

- Current Host IDs
- Entitlement ID
- Product ID
- Product Description
- Total Quantity
- Previous Year's Activations
- Remaining Quantity
- Expiration Date

You can check these settings and adjust Host IDs and the amount of licenses per host to your current environment.

When renewing your current licenses, you have two options:

- **Simple (one-click) renewal**

If there are no changes compared to the previous year's license requirements, you can renew the existing FNP licenses for a license server using **Simple Renewal**.

- **Advanced renewal**

If you need a different combination of licenses, you can select and specify the servers and the quantities of FNP licenses using **Advanced Renewal** and entering the required license counts in the table. The table lists:

- **Total and remaining license count across all servers**
- **Last year's license count (this server)** - Existing license count for the associated server.
- **Already renewed this year (this server)** - Renewed license count for associated server.
- **Renewed other host** - License count migrated to an alternative server and renewed.

# Before you begin

Before you can review and change your current license data, sign in to the Renewal Portal and make sure that you have entitlement IDs assigned to your user account.

## Procedures

### Simple renewal

1. In the **Advantest Renewal Portal** start page, select the **Renew licenses** tab.  
The Renew licenses - server overview page opens.
2. For the server that you want to renew, click **Renew licenses**.  
The Renew licenses - assign to server page opens.
3. Click **Simple Renewal**.

Note: The Simple Renewal button is deactivated if there have been any renewals on the selected license servers.

The License Renewal Summary window is displayed for the selected license server, listing the entitlement IDs, associated product descriptions, the existing license counts and the number of licenses to be renewed.

Note This is the last chance to cancel the action. Ensure that the license renewal summary is correct before using the Generate button.

4. To create the new licenses, click **Generate**.
5. If the data entered is correct, click **Continue**.
6. After you have renewed all your licenses on a particular license server, download these licenses and install them on your license servers.

### Advanced renewal

1. In the **Advantest Renewal Portal** start page, select the **Renew licenses** tab.  
The Renew licenses - server overview page opens.
2. For the server that you want to renew, click **Renew licenses**.  
The Renew licenses - assign to server(s) page opens displaying the existing license information for all entitlements that are hosted on the selected license server.

There are two main actions that you may execute:

- Specify an additional or alternative license server to manage the renewed licenses.
- Specify the number of licenses to be assigned for each license and each license server, if you have the license management split over more than one server.

3. To get an overview of the entitlements, the licenses servers that manage them and the license details, click **Advanced Renewal**.

Note: The Advanced Renewal button expands the table showing the licenses.

4. **Optional:**

You can change the view of the table to show either the product names or the entitlement IDs by toggling the link:

### **Change to Entitlement ID View / Change to Product View**

To sort any table column alphabetically or numerically, click the header of the column.

To find a particular product or entitlement ID, enter a string corresponding to the required entitlement ID or product in any of the filter fields below the column headers and press **Enter**. The list of products or entitlement IDs is filtered to display only those items that include the specified filter string.

5. For each entitlement that needs licenses to be renewed, assign the license count for each associated server. Change the managing license server, if required.

If you want to split the license count across more than one license server, complete the following additional steps:

1. Select a server that is to manage one or more new licenses and enter the required license count for that server.

If the entered license count is less than the total required, the **Split Line** button is activated. The **Split Line** button and other functions are active when you leave the number field (click in another field or outside of the field).

If the number in the count field exceeds the maximum license count, the number box is highlighted in red. You can display an error message tooltip for any assignment errors.

If you want quickly specify the same values as used last year and/or move the licenses to another license server, use the **Assign Server and License Count up to Last Years Count button**. This is helpful if most values are to remain the same and you want to edit only a few license counts. This function can only be used before specifying any changes.

To select an additional server, click **Split Line**.

From the new menu, select an additional server and enter the required license count for that server.

2. If you want to add a new license server, select **Enter new server**.

The Add new license server window opens. Enter the name of the new server and specify the server type.

Click **Apply**.

3. Enter the required license count for the new license server. If you want to remove any pending changes, click **Reset**.

Note: Any newly-added server is stored if you associate a license with it. If you do not use it and leave the page, the new server is not saved and must be added again if required.

6. To generate a license renewal summary, click **Generate License ...**

Note: If you enter a different license server or a higher count as last year, a warning summary window is displayed.

Attention

Warning for license server 00ab12341234  
You have entered a higher count than renewed last year or you are about to transfer licenses to another license server.  
Please view the following list and if the data entered is okay, click on Continue, otherwise cancel the operation

Assign to license server	Entitlement	Product	Last years license count (this server)	Already renewed this year (this server)	Assi licen cou
00ab12341234	1234000000_OID_1234-a123-b123-c123-d123-123	Pin Scale 1600/1600-ME 533Mbps to 1600Mbps N5864UFRM: Pin Scale 1600/1600-ME, 533Mbps to 1600Mbps, perpetual per pin floating license	0	0	

Continue Cancel

If the information entered is correct, click **Continue** to generate a license renewal summary.

7. Click **Generate License** to create the new licenses.

Note: This is the last chance to cancel the action. Please ensure that the license renewal summary is correct before using the Generate License button.

After you have renewed all your licenses on a particular license server, download these licenses and install them on to your license server.

## Non-activated licenses

Non-activated licenses are:

- New licenses that have not been activated
- Existing licenses that were not renewed last year

If non-activated licenses are available, the **Renew license - server overview** page displays the entry **Non-activated items** at the bottom of the list:

a0d3c120c31b	Renew licenses	Amkor Assembly And Test Shanghai Co Ltd (7280), Amkor Technology Philippines Inc (1
a0d3c120c331	Renew licenses	Freescall Semiconductor (China) Ltd (208563)
a0d3c120c339	Renew licenses	Amkor Technology Philippines Inc. (102625)
a0d3c121c0f3	Renew licenses	Freescall Semiconductor (Malaysia Sdn Bhd (102642)
a0d3c128a334	Renew licenses	Freescall Semiconductor (China) Ltd (208563)
c4346b65a78e	Renew licenses	Freescall Semiconductor (China) Ltd (208563)
c4346b72b8d4	Renew licenses	Freescall Semiconductor (Malaysia Sdn Bhd (102642)
e41f13b33470,e41f13b338d0,e41f13b338d8	Renew licenses	Freescall Semiconducteurs France SAS (205032), Freescall Semiconductor (China) Ltd (
ecb1d72bb8fe	Renew licenses	Freescall Semiconductor Inc (205447)
ecb1d72bb92e	Renew licenses	Freescall Semiconductor (M) Sdn Bhd (205577)
ecb1d72bb948	Renew licenses	Freescall Semiconductor Inc (205447)
ecb1d739008f	Renew licenses	Freescall Semiconductor Inc (205447)
eeddcbbaa00	Renew licenses	Freescall Semiconductor Inc (205447)
f04da2083f27	Renew licenses	Freescall Semiconducteurs France SAS (205032), Freescall Semiconductor (China) Ltd (
f04da2084746	Renew licenses	Freescall Semiconductor (China) Ltd (208563), Freescall Semiconductor (M) Sdn Bhd (2
f04da2084aca	Renew licenses	Freescall Semiconductor (China) Ltd (208563), Freescall Semiconductor (M) Sdn Bhd (2
Non-activated items	Activate licenses	

To open the page displaying the non-activated licenses, from which you can activate or renew the licenses, click the **Activate licenses** button.

After you have activated or renewed a license to a license server, you can view these licenses in the **Renew license - server overview** page by selecting the associated license server.

Note: To split a non-activated license, first select the license server and then enter the count.

## Results

All selected licenses are renewed and can be installed on the license server after you have downloaded them.

## What to do next

Proceed with [Downloading licenses](#)

# Downloading licenses

You must download the licenses that you have renewed and install them on your license server.

## About this task

You can download the licenses that you have renewed in one of two ways:

- Download directly to your computer
- Email to your registered business email account

To download available license files, complete the following procedure.

## Before you begin

You must have already renewed licenses and generated the associated license files for download.

## Procedure

1. In the **Advantest Renewal Portal** start page, select the **Download licenses** tab.  
The Download license files page opens.
2. Select the license servers for which you want to download the newly generated license files.  
License servers that have available license files are identified by dark checkboxes.
3. Select how you want to have the license files delivered by checking the associated checkbox:
  - **Download as ZIP-file** directly to your computer.
  - **Email to** your registered business email account.  
You can select both options.

Note: You must select at least one of the options to activate the Get license button.

Click **Get license**.

When downloading the ZIP file, the **File Download** window opens. Select **Open** or **Save**.

**Open** - the ZIP file is opened in the associated compression application.

**Save** - The **Save As** window opens where you can specify the destination location for the licenses ZIP file.

When requesting the ZIP file to be sent by email, an email containing the license ZIP file is automatically sent to your specified email address.

## Results

The selected licenses are received in a ZIP file. The licenses within the ZIP file are sorted alphabetically by organization and license name.

# Viewing license information and reporting

## Subtopics

1. [Creating a report](#)
2. [Exporting a report](#)

The Overview and Reports page helps you to get an overview about the status of your product licenses and entitlements that are assigned to your user account. The following preconfigured reports are included:

- Entitlement by organization report
- Product by organization report
- Product by server report
- Splitted entitlements overview

You can also use the export tools available from the Overview and Reports page to create simple reports in Microsoft Excel or CSV formats.

Even outside of the renewal period, the Reports page gives you an overview about your licenses (only perpetual, renewable licenses).

---

## Creating a report

You can run any of the preconfigured reports to get information about the status of your licenses.

## About this task

You will run one of the available preconfigured reports:

- Entitlement by organization report
- Product by organization report
- Product by server report
- Splitted entitlements overview

To create a report about your licenses and entitlements, complete the following procedure.

# Procedure

1. In the **Advantest Renewal Portal** start page, select the **Reports** tab.

The Overviews and Reports page opens.

**ADVANTEST** heike.Customer | Log O

Dashboard Assign entitlements Renew licenses Download licenses **Reports** Manage aliases License comparison

Overview and Reports

Whole renewal report

Report type

Server / Product	Total	Completion in %
Enter filter criteria here and press return		
▶ a0d3c11acea5_hk	4	<div style="width: 100%;"></div>
▶ 0019bb579093	3,124	<div style="width: 100%;"></div>
▶ Alias Test Sort	515	<div style="width: 100%;"></div>
▶ 6451065d3276	2,328	<div style="width: 100%;"></div>
▶ Hasi-42	1,650	<div style="width: 100%;"></div>
▶ a0481c90393f	4	<div style="width: 100%;"></div>
▶ f04da2083f27	12,251	<div style="width: 100%;"></div>
▶ a0481c9479d6	4	<div style="width: 100%;"></div>
▶ a0d3c120c31b	20	<div style="width: 100%;"></div>
▶ 8cdcd4327b1d	1,558	<div style="width: 100%;"><div style="background-color: black; color: white; padding: 2px;">180% of items renewed (36 of 20)</div></div>
▶ 0017082ad6e5_triad	267,392	<div style="width: 100%;"></div>
▶ 40a8f063f372	3	<div style="width: 100%;"></div>
▶ a0481c99fe65	4	<div style="width: 100%;"></div>
▶ c4346b65a78e	50	<div style="width: 100%;"></div>

2. Using the **Download csv file with renewal data** button, a csv file is generated with all license renewal data to your assigned entitlements, which you can save to a location of your choice. The report is based on the information available in the files Renewed.csv and To-Be-Renewed.csv from the License Renewal Comparison Tool with additional information, including alias data, user assignment information, and renewed-by information.

Alternatively, from the menu, select the report that you want to display:

- Entitlement by organization report
- Product by organization report
- Product by server report
- Splitted entitlements overview

The selected report results are displayed in collapsed form, listing the products or entitlements, the total number of licenses, and the percentage of those licenses that are renewed and up to date.

3. **Optional:** To show or hide the report details, use the **Expand All** and **Collapse All** buttons.
4. **Optional:** Enter a search string in the filter field and press **Enter**. The report result is filtered to display only entries containing the specified string.

Note: The reports available from the menu show you a percentage for the current renewal states. The percentage is calculated with respect to the renewal/activation levels from the previous year. For example, If you have 10 license products on a license server and you renew 8 of them on the same license server, the **Product by server report** shows 80% of items renewed (8 of 10). If you move the remaining two license products to another license server, the first license server completion status will remain at 80% even though you might actually be finished with the renewal tasks. Conversely, if you renew and activate more license products on a license server than were installed last year, the completion status will display a value over 100%.

## Results

The selected report shows you the renewal completion status for the entitlement IDs assigned to your user account.

## What to do next

You can export the report results to a file in Microsoft Excel or CSV format.

---

# Exporting a report

You can export the results of the preconfigured license reports. The reports show you the renewal completion results related to the entitlement IDs assigned to your user account.

## About this task

You export the displayed report results to a file in Microsoft Excel or CSV format.

To export the displayed report, complete the following procedure.

## Before you begin

Make sure that the report results that you want to export are displayed.

## Procedure

1. In the **Reports** tab of the **Advantest Renewal Portal**, make sure that the report results that you want to export are displayed.
2. To select the format of the report file to be exported, click **Excel** or **CSV**.
3. Download and save the report file to your computer.

## Results

The selected report results are saved to a file in the selected format and downloaded to your computer or storage location.

## Related information

[Creating a report](#)

[Viewing license information and reporting](#)

# Managing entitlement and license server aliases

Entitlements and servers can be assigned aliases (alternative, easily-recognizable names).

## About this task

Assign an alias for an entitlement or a server and add associated information, such as contact data.

To assign an alias to an entitlement ID or a server ID, complete the following procedure.

## Before you begin

You must first identify the server or entitlement to which you want to apply an alias.

## Procedure

1. In the **Advantest Renewal Portal** start page, select the **Manage aliases** tab. The Alias Management page opens.
2. Depending on the type of alias you want to create, select **Entitlement alias** or **Server alias**.
3. **Optional:** Click the header of any table column to sort it alphabetically or numerically.
4. For the chosen entitlement or server, enter an alias and contact information (typically email address).

Note: The license server alias is also used to identify the license server in the license download file name. So that the license server name is correctly included in the download file name, use only the following characters: 0-9, a-z, A-Z, -, ".", " (fullstop), ", " (comma), and \_.

Any other characters are replaced with \_ in the license file name.

For license servers, you can also enter:

- Location information to make it easier to find the license server system.
- License file header information for each license server:  
If you define a license header, this license header is taken for the renewed licenses instead of the standard license header:

```
SERVER this_host host  
VENDOR socbu  
USE_SERVER
```

To open the **Edit License File Header** window, click **+ New**. Enter header information as appropriate for your selected license server in the value field and click Update.

For example:

```
SERVER v93t001 dd12fe34aa65 27050  
VENDOR socbu  
USE_SERVER
```

Note: The alias information is a global value. Any user who is assigned an entitlement ID is able to change the alias information. Therefore, it is recommended to agree a local procedure for alias handling, for example, only change aliases as a result of significant external changes such as contact information changes. Therefore, the rightmost columns show the user name and date of the last change.

5. Repeat these steps for all other entitlement IDs and server IDs for which you want to create aliases.
6. Click **Save**.

## Results

The selected entitlements and servers are now identified by their aliases. The alias name is used on the other Renewal Portal pages as the primary name. The original value is either listed beneath the alias or displayed in a tooltip. The contact info and location field are not displayed on other Renewal Portal pages and is only available for you and your Advantest representative.

# Downloading the data for license comparison

The License Renewal Comparison Tool supports you in the annual license renewal process by providing you with two summary CSV files (Renewed.csv and To-Be-Renewed.csv) that list the already renewed licenses and the still-to-be-renewed licenses. The two files help you maintain an overview of the current status of the Advantest License Renewal Portal's records.

## About this task

To download the two summary CSV files for the license comparison tool, complete the following procedure.

## Procedure

1. In the **Advantest Renewal Portal** start page, select the **License Comparison** tab.  
The License Comparison Download page opens.
2. Click **Download file for license comparison tool**.
3. Save the `License-Comparison-date.zip` file containing the (`Renewed.csv` and `To-Be-Renewed.csv`) files.

## Results

You have downloaded the Renewal Portal data files you need to load in the license comparison tool:

- `Renewed.csv`
- `To-Be-Renewed.csv`

# License Renewal Comparison Tool

## Subtopics

1. [Installing and updating the Comparison Tool](#)
2. [Executing a comparison](#)
3. [Managing files to compare](#)
4. [How to proceed in case of discrepancies](#)
5. [getOrderNumbers tool](#)

The License Renewal Comparison Tool supports you in the annual license renewal process.

The tool allows you to compare the license inventory of your license servers with the License Renewal Portal's download records. These portal downloads (**Renewed....csv** and **To-Be-Renewed....csv**) show which licenses were already renewed, and which licenses still need to be renewed.

You must have visited the License Renewal Portal and your license servers before running the License Renewal Comparison Tool, so that those inputs to the tool are already available.

The License Renewal Comparison Tool displays the download records, the license inventory of your license servers, and any mismatching in a tabular format. Having all this information in one place will make any licensing discrepancies visible.

# Installing and updating the Comparison Tool

The License Renewal Comparison Tool is written in Java and can be run on a PC running Microsoft (MS) Windows, or on a Red Hat Enterprise Linux (RHEL) workstation, including a V93000 system controller or an RHEL workstation serving as a FLEXlm license server.

## About this task

**Note:** Every year, starting 2017, Advantest will provide an updated license product list. You must install this list before using the License comparison Tool.

The installation and start procedures differ between Microsoft (MS) Windows and Red Hat Enterprise Linux (RHEL). Once installed, you can run the Comparison Tool in on-line or in off-line mode in either environment.

## Before you begin

Download the installation files for the Comparison Tool from the Advantest web page as follows:

Go to: [www.advantest.com/licensing](http://www.advantest.com/licensing) and go to **Download License Comparison Tool and GetOrderNumbers Tool.**

Download the installation package appropriate for your computer operating system. The available packages are:

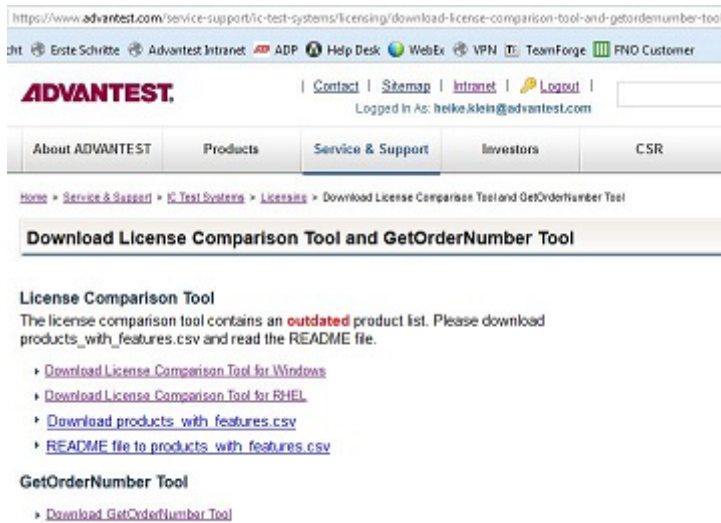
- MS\_Windows\_Installation\_Package\_64bit
- MS\_Windows\_Installation\_Package\_32bit
- Linux\_Installation\_Package\_for\_RHEL5

**Note:** Also download the getOrderNumbers tool appropriate for your system controller operating system. You will need this file later. The available tools are:

- GetOrderNumbers\_Tool\_0.91\_for\_RHEL5
- GetOrderNumbers\_Tool\_0.91\_for\_RHEL7

- Products\_with\_features.csv

Note: Check the date on the webpage to make sure that you have the latest version of the Products\_with\_features.csv file.



You can download the installation files for the Comparison Tool from the Advantest web page or via the start page of the License Renewal Portal.

1. To download the tool from the Advantest web page sign on to the Advantest Software Center and go to: **Other Software > Active Tools and Files > Licensing > LicensingTools**.
2. Download the appropriate tool for your operating system and the `products_with_features.csv` file.

## Procedures

### MS Windows installation and start:

1. Execute the RenewalComparison.exe file. The installation wizard appears.
2. To complete the installation follow the instructions.
3. Save the new `Products_with_features.csv` file to the following location:

**64 bit:** `c:\Program Files(x86)\Advantest\Renewal`

**32 bit:** `c:\Program Files\Advantest\Renewal`

4. To start the Comparison Tool on a PC click

## Start > All Programs > Advantest > Advantest License Renewal Comparison Tool > Renewal.bat

The welcome window with further information appears (see below).

### RHEL installation and start:

To install the Comparison Tool on RHEL you must have superuser rights.

1. Open a Terminal Window and switch user (su) to superuser (root).
2. Change to the directory where you saved the `RenewalComparison*.bin` file.
3. To execute the installation package type

```
./RenewalComparison_el5_x86_64.bin
```

This unpacks the installation wizard and launches it.

4. To complete the installation follow the instructions.
5. Save the new `Products_with_features.csv` file to the following location:

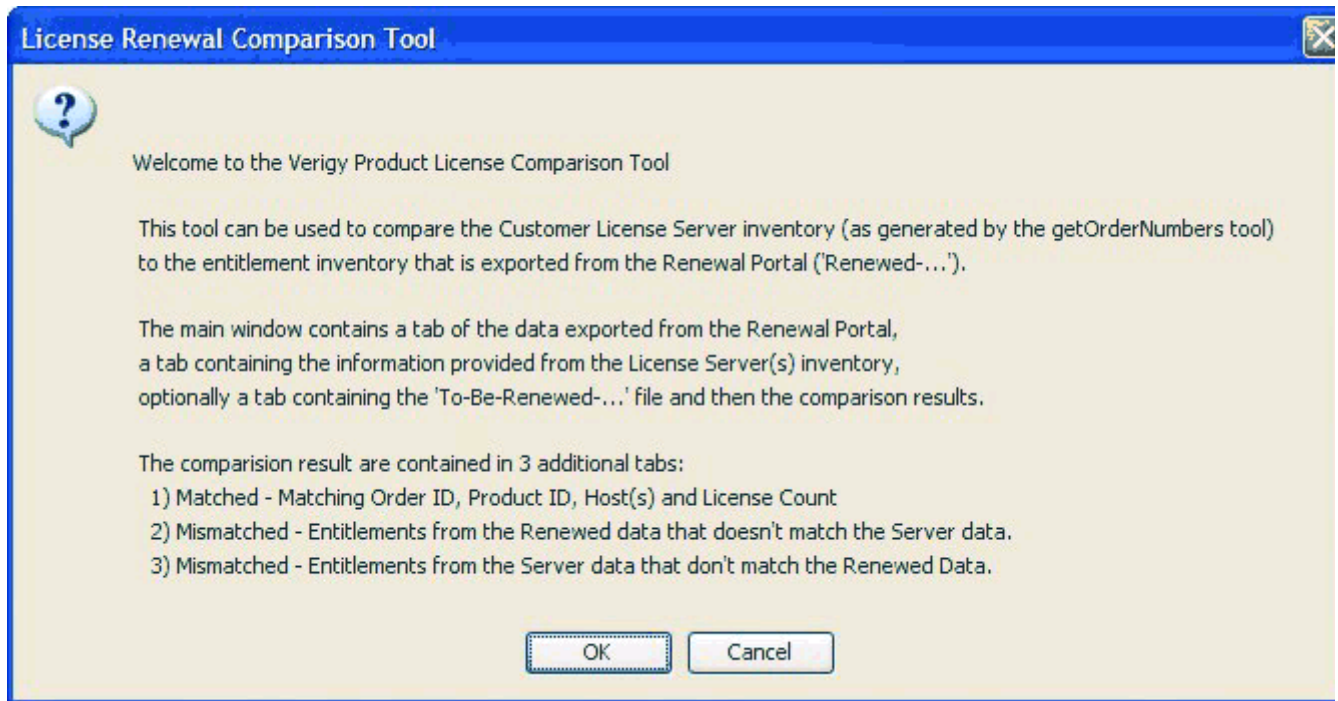
```
/opt/93000.Renewal/bin
```

6. To close the installation wizard click **Done**.
7. Exit the superuser mode.
8. To start the Comparison Tool type

```
/opt/93000_Renewal/bin/startComparisonTool
```

## Results

The Comparison Tool starts with the welcome window which provides further information.



## What to do next

If you have the files required for a comparison click **OK**. If not, click **Cancel** and restart the Comparison Tool once you have the required input files.

## Related information

[Executing a comparison](#)

[Managing files to compare](#)

# Executing a comparison

The License Renewal Comparison Tool helps you to make any licensing discrepancies visible by comparing the license status of your license servers against the status of the Advantest License Renewal Portal.

## About this task

The tool prompts you to load several input files and automatically compares them against each other and a list of Advantest products and features. You can run the tool on a Linux workstation or on a PC running Microsoft Windows.

## Before you begin

Before starting the Comparison Tool, you must have downloaded the required portal files from the License Renewal Portal. In addition, you must have run the [getOrderNumbers tool](#) on your license servers.

**Note:** Check the date on the webpage to make sure that you have the latest version of the `Products_with_features.csv` file.

Before you start a comparison you must have the following files ready:

- Portal download file of already renewed licenses (`Renewed-*-date.csv`)
- License server inventory file or files (\*.txt) generated by the getOrderNumbers tool.

The following file is optional:

- Portal download file of still to be renewed licenses (`To-Be-Renewed-*-date.csv`)

If you Do not have the required input files you cannot complete the comparison.

Advantest recommends to collect all these files in a single directory. This will ease the task. For details see [Managing files to compare](#).

# Procedure

1. Start the Comparison Tool (see [How to install and start the Comparison Tool](#)).
2. Follow the instructions and load the following files:
  - the portal download file of renewed licenses (Renewed-\*\*-date.csv).
  - optionally, the portal download file of still to be renewed licenses (To-Be-Renewed-\*\*-date.csv).
  - the license server inventory \*.txt files generated by the [getOrderNumbers](#) tool.

# Results

The Comparison Tool's processes and compares all these files against the data displayed in the Product Number Key tab (see below). The process may take a few seconds. When done, the tool displays the result in up to seven tabs. Per default the Matched tab shows up in the foreground.

The screenshot shows the Comparison Tool interface with the 'Matched' tab selected. The table displays license server information and entitlements. The table has columns for License Server(s), three entitlement types (N5802UJPRM, N5921UJPRM, N5922UJPRM), and Entitlement. The data is as follows:

License Server(s)	N5802UJPRM	N5921UJPRM	N5922UJPRM	Entitlement
0011BB222222	1			1234567890
		1	1	9999999999
<b>Totals</b>	<b>1</b>	<b>1</b>	<b>1</b>	
00AA33333333	1			2220001111
		1	2	2230002222
<b>Totals</b>	<b>1</b>	<b>1</b>	<b>2</b>	

The interface also shows a 'Status: READY' indicator and a time of 3:19 PM.

The tabs of the tool contain the following data:

- **Product Number Key:**

Maps Product IDs, Product Descriptions, and the relevant Licensing Model. This data is required to map the features of the license inventory files with the product numbers in the portal download files.

- **Renewed\_In\_Portal:**

Lists all licenses that were already renewed and also shows if there is any remaining data.

- **To\_Be\_Renewed\_In\_Portal:**

Lists all licenses which still need to be renewed. Advantest recommends to use this download data from the License Renewal Portal as it provides insight, in case the renewal process does not run as smooth as expected.

- **License\_Server\_Output:**

Lists all licenses found by the getOrderNumbers tool on the license servers.

- **Matched:**

Lists those entitlements that were renewed and could be located on the license servers. These entitlements require no further effort.

- **Renewed\_Entry\_Without\_Server\_Entry:**

Lists any entitlements that were renewed but have no matching entry in the License Server inventory data. These could have been rehosted or never installed on the license servers. Any entry here represents a discrepancy and requires further investigation.

- **Server\_Entry\_Without\_Renewed\_Entry:**

Lists any entitlements found in the License Server inventory data, but not found in the License Renewal Portal. Again, any entry here represents a discrepancy and requires further investigation.

## What to do next

You can save the data of any tab in a spreadsheet format. To save a tab move it to the foreground and click **Save As....** See also [How to save resulting files](#).

If there are any discrepancies, that is, any entries in the `Renewed_Entry_Without_Server_Entry` or `Server_Entry_Without_Renewed_Entry` tabs, please proceed as outlined in [How to proceed in case of discrepancies](#).

## Related information

[Managing files to compare](#)

[getOrderNumbers tool](#)

[How to proceed in case of discrepancies](#)

# Managing files to compare

## Subtopics

1. [How to restart and reload files](#)
2. [How to filter license data](#)
3. [How to view and sort data](#)
4. [How to save resulting files](#)
5. [How to view and save the log file](#)

The License Renewal Comparison Tool requires the following input files:

- One or more license server inventory file or files (`*.txt`) generated by the `getOrderNumbers` tool.
- Portal download file of already renewed licenses (`Renewed-*-date.csv`)

Optionally, you can load the portal download file of still to be renewed licenses (`To-Be-Renewed-*-date.csv`).

The comparison tool processes these files against the data in the Product Number Key tab. This data is provided with the yearly updated version of the tool (see [How to install and start the Comparison Tool](#)).

## License server inventory .txt files

In most cases you will have a single license server inventory file (`getOrderNumbers` output file).

This is the case if your licensing setup consists of a single FLEXlm license server, if it is a three-license-server redundancy configuration, or for multiple independent license servers in a network. For these configurations you will have one license server inventory file showing the installed licenses for all license servers.

Only in case of multiple license servers in independent networks you will have one license server inventory file per network. In this case you must run the [getOrderNumbers tool](#) on a server in each network.

You must use a `.txt` file name extension for each file, for `example license-inventory-server01.txt`.

## Renewed-*\*-date.csv* files

You must visit the License Renewal Portal before running the Comparison Tool. The portal allows you to download a record file which lists the already renewed licenses (`Renewed-*-date.csv`).

## To-Be-Renewed-*\*-date.csv* files

The License Renewal Portal also allows you to download record file of still to be renewed licenses (`To-Be-Renewed-*-date.csv`). This file as it provides insight, in case the renewal process does not run as smooth as expected.

## Collect in single directory

The License Renewal Portal writes both .csv record files into a `License.zip` file. For further processing you need to extract them.

Avantest recommends to create a single directory or folder, for example `verigy-license-renewal-year`, and collect all these files in this directory. If all input files are available in your local file system, you can run the Comparison Tool stand-alone in off-line mode.

The directory of your collected input files may look as follows:

```
verigy-license-renewal-2009/license-inventory-server01.txt
```

```
verigy-license-renewal-2009/Renewed-*-date.csv
```

```
verigy-license-renewal-2009/To-Be-Renewed-*-date.csv
```

## Related information

[Installing and updating the Comparison Tool](#)

[getOrderNumbers tool](#)

---

## How to restart and reload files

Restarting the comparison process or reloading files may be required when you have additional or updated input data.

# About this task

If you restart the process, you follow the prompts of the License Renewal Comparison Tool and reload the files as requested. (See the procedure instructions below.)

You can also reload single files individually or load additional license server inventory files. In this case click **File > Open...** and select the required files.

In both cases, once the last required file is loaded, the Comparison Tool automatically reprocesses the currently loaded files and displays the result.

## Before you begin

To restart the comparison process or to reload updated files, the Comparison Tool must be running and you must have completed the comparison process at least once. Make sure you have the additional or updated files available. If not, you cannot complete the task and the Comparison Tool will close.

## Procedure

1. To restart the comparison process, click **File > Restart**.  
The Portal Export Available dialog appears and asks you to load the portal export file of renewed licenses (`Renewed-*-date.csv`).
2. If you have the required portal export file click **Yes**. The Select Renewal Portal Export File dialog appears.
3. Navigate to the directory containing the portal export files, and double-click the `Renewed-*-date.csv` file. The Comparison Tool's main window changes to two tabs and a dialog prompts you to optionally load the portal export file of un-renewed and unassigned licenses (`To-Be-Renewed-*-date.csv`).
4. If you have the `To-Be-Renewed-*-date.csv` file click **Yes** and load the file. If you Do not have the file click **No**.  
In both cases the next dialog appears and asks you to load your license server inventory `*.txt` files.
5. If you have the license server inventory `*.txt` files click **Yes**. A select dialog appears.

6. Click the `*.txt` file containing your license server inventory data (for example, `my_licenses.txt`) and **Open**. You can also press **Shift** or **Ctrl** and select multiple files to load.  
An additional tab opens in the Comparison Tool's main window and the Additional Server Inventory Files? dialog appears.
7. If you have any additional license server inventory `*.txt` files click **Yes** and proceed as before to load the files. If you have no additional files click **No**.

## Results

The Comparison Tool's main window now shows up to seven tabs, and displays the Matched tab in the foreground.

---

# How to filter license data

Filtering allows you to reduce the amount of displayed license data.

## About this task

To reduce the amount of displayed data you can filter the data either based on

- customers,
- license server host IDs,
- order IDs,
- product descriptions, or
- license expiration dates.

To sharpen the focus even further you can also combine these filter parameters.

## Before you begin

All required files must be loaded and the Comparison Tool must have completed the comparison process.

## Procedure

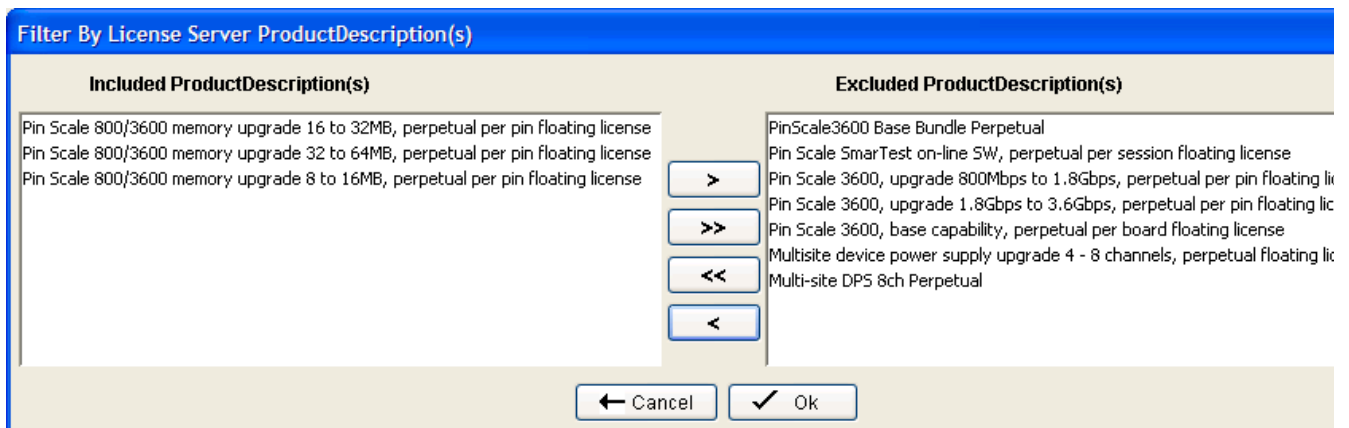
1. To filter based on product descriptions, for example, click **Filter > Filter Using Product Descriptions**.  
The filter dialog appears. On the left it shows the included items, on the left the excluded items.
2. To move an individual parameter to the right to be excluded, click first the parameter then click >. To move one to the left to be included, select it and click <.
3. To move all parameters to the right, click >>. To move all to the left, click <<.
4. To complete the filtering and close the dialog click **OK**.

## Results

The selected filter parameters are applied and the Comparison Tool shows a reduced amount of data in all tabs.

The filtering parameters will stay applied until you exit the tool or click **Filter > No Filtering**.

## Example



## How to view and sort data

toggling between list and matrix views views plus sorting data columns allows you to improve readability or display data according to your needs.

## About this task

You can toggle the view of the tabs

- Renewed\_in\_Portal
- To\_Be\_Renewed\_in\_Portal (if data loaded)
- License\_Server\_Output

Data columns can be sorted in list views that show the raw data without coloring. The current sort column is marked by a green arrow, pointing either upwards (ascending) or downwards (descending).

Colored matrix views are fixed and cannot be sorted. In this matrix view, you can display tool tips with a product description for each product number.

## Before you begin

You must have loaded all files and the tool must have completed the comparison before you can toggle views or sort data.

## Procedure

- To toggle a view:

Right-click a supported tab and click **Toggle ... View**.

The tab switches either from a colored matrix view to a list view or vice versa.

- To sort a data column:

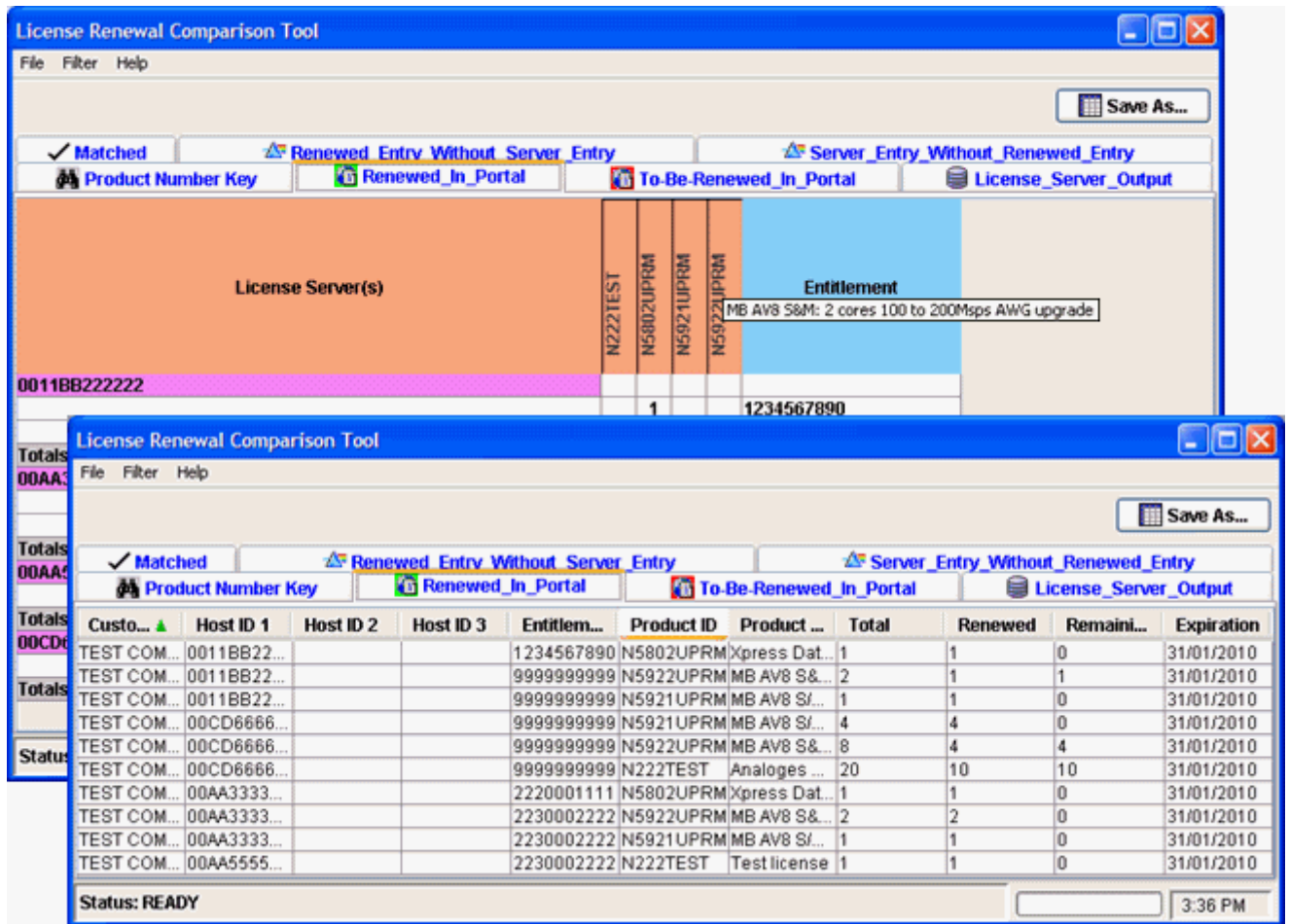
In a list view click any data column header. The whole table is rearranged based on the alphanumerical sort order of this column. A green arrow indicates the sorted column.

The first click produces an ascending order, a second click produces a descending order. The third click brings it back to its original order.

- To display tool tips:

In a colored matrix view move the pointer over a product number in the header. The appearing tooltip displays the more familiar product description.

## Example



# How to save resulting files

The License Renewal Comparison Tool displays the result of the comparison process in several tabs, for example the Matched tab. You can save each tab in a .csv spreadsheet file.

## About this task

Saving the comparison results allows you to view the .csv files in a spreadsheet software like MS Excel.

## Before you begin

The Comparison Tool must be running and must have completed the comparison at least once.

# Procedure

1. To save the contents of a tab, click the tab to bring it to the foreground.
2. Click **Save As....**  
A save dialog opens. Default location is your home directory. Default file name is the name of the tab plus the current date and time: `Nameyyymmddhhmm.csv`, for example `Matched200901210915.csv`
3. To accept the default location and file name click **Save**.

# Results

The result file is saved and ready to be opened in a spreadsheet software.

# Example

	A	B	C	D	E
1	License Server(s)	N5802UPRM	N5921UPRM	N5922UPRM	Entitlement
2	0011BB222222				
3		1			1234567890
4			1	1	9999999999
5	Totals	1	1	1	
6	00AA33333333				
7		1			2220001111
8			1	2	2230002222
9	Totals	1	1	2	
10					

# How to view and save the log file

The License Renewal Comparison Tool provides a log file which lists all files you loaded and any issues during the comparison process.

## About this task

Checking the log file will give you confidence that the comparison process ran successfully without errors. In case of errors you can review the log file for information. This file may also be requested

by Advantest support personnel to debug any tool issues.

## Before you begin

The Comparison Tool must be running and must have completed the comparison at least once.

## Procedure

1. To view the log file click **Help > Show Log**. A dialog window displays the log file.
2. To save the log file click **Save As...**

The default location is your home directory. The default file name is `RenewalLog.txt`.

## Example

Your log file may look as follows:

```
Tuesday, October 21, 2008 - 11:33 AM
>>>> Logging Started <<<<

Tuesday, October 21, 2008 - 11:33 AM
V93000 License Renewal Utility, Version 2009 (build 20080805.2211)

Tuesday, October 21, 2008 - 11:33 AM
Copyright(c) 2008, 2009 Verigy Limited, Verigy US Incorporated, All Rights Reserved.

Tuesday, October 21, 2008 - 11:33 AM
Loaded Verigy Products with Features File: products_with_features.csv

Tuesday, October 21, 2008 - 11:34 AM
Loaded Portal License Renewal Export File: Renewed_name-date.csv

Tuesday, October 21, 2008 - 11:34 AM
Loaded Portal To-Be-Renewed License Export File: To-Be-Renewed_name-date.csv

Tuesday, October 21, 2008 - 11:35 AM
Loaded Server Inventory File: license-inventory-server01.txt
```

# How to proceed in case of discrepancies

The Advantest License Renewal Comparison Tool helps you to compare the license status of your license servers against the status of Advantest's license database (reflected in the Advantest License Renewal Portal).

## About this task

Solving these discrepancies may be a tedious task. The recommendations below can only be on a general level, as every situation will be different.

Any discrepancies will be listed in the **Renewed\_Entry\_Without\_Server\_Entry** or **Server\_Entry\_Without\_Renewed\_Entry** tabs of the Comparison Tool.

The recommended procedures differ depending on where the unmatched license was found.

## Before you begin

Make sure your input files are up-to-date and reflect the current status.

Make sure you have all input files, especially in case of multiple license inventory files.

## Procedures

### **Renewed\_Entry\_Without\_Server\_Entry tab:**

An entry in this tab means, an entitlement was renewed in the license database, but was not found on any of your license servers. The reason could be one of the following:

- You may have missed out one license server when running the getOrderNumbers tool.
  - **Solution:** Run the getOrderNumbers tool on that license server host.
- You may have forgotten to load one or more of the generated license inventory files.

- **Solution:** Load the files.
- You may have activated a license but never installed it on your license servers.
  - **Solution:** Install the license and rerun the getOrderNumbers tool.
- You may have transferred a license to another legal entity or to another user, but that transfer was not yet reflected in the entitlement assignment in the License Renewal Portal.
  - **Solution:** Update the license database and assign the correct owner.

If none of the above applies, please contact your Advantest representative.

## Server\_Entry\_Without\_Renewed\_Entry tab:

An entry in this tab means, a license was found on one of your license servers, but was not renewed in the license database. The reason could be one of the following:

- You may have forgotten to assign the entitlement to the user of the License Renewal Portal.
  - **Solution:** Assign the entitlement.
- You may have purchased a new product, and its license needs to be renewed for the first time.
  - **Solution:** The newly purchased licenses will show up in the To\_Be\_Renewed data once the Renewal round starts. Please check the download records of To\_Be\_Renewed licenses.
- You may have transferred or rehosted a license to another user, server, or to another legal entity, but that transfer or rehosting was not yet completed on the license server.
  - **Solution:** Remove the license from your server.
- You may have received a license from another user or legal entity, but that transfer is not yet reflected in the License Renewal Portal.
  - **Solution:** Update the Entitlement Assignment in the License Renewal Portal.

If none of the above applies, please contact your Advantest representative.

## What to do next

Once the discrepancy is solved, make sure both your license servers and the license database are up-to-date.

# getOrderNumbers tool

## Subtopics

### 1. [Running the getOrderNumbers tool](#)

The getOrderNumbers tool provides you with a complete list of the licenses installed on your license servers. This output is one of the files required by the License Renewal Comparison Tool and helps you with the annual license renewal process.

**CAUTION:** Do not run the `getOrderNumbers` tool under user `root`. This can lead to longer execution times.

**Note:** Prerequisite: FLEXlm license server software version:  $\geq$  11.9.1.1.

**Note:** The `getOrderNumbers` tool is available for Red Hat Enterprise Linux 5 and 7. Use the version applicable to your operating system version.

You can run the `getOrderNumbers` tool either on one of your license server hosts or on any of the SmarTest clients.

Sign on to the Advantest Software Center and go to: **Other Software > Active Tools and Files > Licensing > LicensingTools > getOrderNumbers**

To install the tool, extract it and copy it to a host in your network, for example at `/home/my_name/license-renewal-tools/getOrderNumbers.`

Once you copied the file, make sure it is executable.

For the recommended three-license-server redundancy configuration or for multiple license servers within a network, you need to run the `getOrderNumbers` tool only once, either on one of the license server hosts or on a SmarTest client host.

If you have license servers in multiple independent networks, you must run the `getOrderNumbers` tool in each network.

# Example

For example, for a three-license-server redundancy configuration, the output is one license server inventory file showing the installed licenses for all three servers:

```
(Version: 0.8)
Warning: LM_LICENSE_FILE not set. Using default path /opt/flexlm/license to check for your available licenses.
To set the LM_LICENSE_FILE do the following: export LM_LICENSE_FILE=<port>@<host>:<port>@<host> ...
Check server: /opt/flexlm/license/lic_info.lic

License String | Count | License Server | Expir. Date | Server Hostid | Server2 Hostid | Server3 Hostid | Renew | Order ID
-----|-----|-----|-----|-----|-----|-----|-----|-----
Digital_Shared_Mem_16_32MB | 3411 | /opt/flexlm/license/lic_info.lic | 31-Jan-2009 | server_01 | server_02 | server_03 | Yes | 1347363
Digital_Shared_Mem_16_32MB | 3411 | /opt/flexlm/license/lic_info.lic | 31-Jan-2009 | server_01 | server_02 | server_03 | Yes | 359000765
Digital_Shared_Mem_16_32MB | 3411 | /opt/flexlm/license/lic_info.lic | 31-Jan-2009 | server_01 | server_02 | server_03 | Yes | 359000765
Digital_Shared_Mem_32_64MB | 3411 | /opt/flexlm/license/lic_info.lic | 31-Jan-2009 | server_01 | server_02 | server_03 | Yes | 1347363
Digital_Shared_Mem_32_64MB | 3411 | /opt/flexlm/license/lic_info.lic | 31-Jan-2009 | server_01 | server_02 | server_03 | Yes | 378001437
Digital_Shared_Mem_32_64MB | 3411 | /opt/flexlm/license/lic_info.lic | 31-Jan-2009 | server_01 | server_02 | server_03 | Yes | 378001437
Digital_ES010_A_800_1800Mbps | 3411 | /opt/flexlm/license/lic_info.lic | 31-Jan-2009 | server_01 | server_02 | server_03 | Yes | 1347363
Digital_ES010_A_800_1800Mbps | 3411 | /opt/flexlm/license/lic_info.lic | 31-Jan-2009 | server_01 | server_02 | server_03 | Yes | 378001437
Digital_ES010_A_800_1800Mbps | 3411 | /opt/flexlm/license/lic_info.lic | 31-Jan-2009 | server_01 | server_02 | server_03 | Yes | 359000765
o
o
o
DC_E9711_CM_4_8 | 3 | /opt/flexlm/license/lic_info.lic | 31-Jan-2009 | server_01 | server_02 | server_03 | Yes | 1347363
DC_E9711_CM_4_8 | 2 | /opt/flexlm/license/lic_info.lic | 31-Jan-2009 | server_01 | server_02 | server_03 | Yes | 378001437
DC_E9711_CM_4_8 | 2 | /opt/flexlm/license/lic_info.lic | 31-Jan-2009 | server_01 | server_02 | server_03 | Yes | 359000765
SmarTest_S0C | 1 | /opt/flexlm/license/lic_info.lic | 31-Jan-2009 | server_01 | server_02 | server_03 | Yes | 359000765
SmarTest_S0C | 1 | /opt/flexlm/license/lic_info.lic | 31-Jan-2009 | server_01 | server_02 | server_03 | Yes | 378001437
SmarTestOffline_S0C | 1 | /opt/flexlm/license/lic_info.lic | permanent | server_01 | server_02 | server_03 | No |
SmarTestOffline_S0C | 5 | /opt/flexlm/license/lic_info.lic | permanent | server_01 | server_02 | server_03 | No |

Summary of detected order numbers:
-----
Detected renewable order number: 1347363
Detected renewable order number: 359000765
Detected renewable order number: 378001437
```

## Related information

[License Renewal Comparison Tool](#)

# Running the getOrderNumbers tool

You need to run the `getOrderNumbers` tool as preparation for the annual license renewal. The tool creates a complete list of the FlexLM licenses installed on your license servers. The output is one of the files required by the License Renewal Comparison Tool.

## About this task

You will run the `getOrderNumbers` tool either on one of the FlexLM license server hosts or on a SmarTest client. The tool is supported on Red Hat Enterprise Linux 5 and 7 (RHEL 5 and RHEL 7). Use the version applicable to your operating system version..

To run the tool type:

```
./getOrderNumbers [-q<quiet>] [-s<ummary>]
```

The command options are:

`-q<quiet>`: Hide detailed license information and display only the detected order numbers.

`-s<ummary>`: Display only the summary of all license quantities and Do not split the counts per order number.

## Before you begin

Make sure your license configuration either uses the default path `/opt/flexlm/license`, or you have set the `LM_LICENSE_FILE` environment variable. Otherwise licenses cannot be found. See chapter 3 of the *Macrovision FLEXlm End Users Guide* for a complete explanation of how to use this environment variable to establish a multiple server network.

## Procedure

1. Open a terminal window and change to the directory where you installed the `getOrderNumbers` tool.
2. Type, for example `$ > ./getOrderNumbers > license-inventory-server01.txt`.  
This saves the output to the `license-inventory-server01.txt` file. The Comparison Tool expects a file with a `.txt` file name extension.
3. Copy the license inventory file to the directory where you collect the files for the comparison process, for example `verigy-license-renewal-2009`. (See also [Managing files to compare](#)).

## Results

The created output file is the license inventory file required for the license renewal comparison process. The file lists all license servers that were checked, provides a table with all FlexLM licenses installed in your license environment, plus a summary of the detected renewable order numbers at the bottom.

## Example

(Version: 0.8)

Warning: LM\_LICENSE\_FILE not set. Using default path /opt/flexlm/license to check for your available licens

To set the LM\_LICENSE\_FILE do the following: export LM\_LICENSE\_FILE=<port>@<host>:<port>@<host> ...

Check server: /opt/flexlm/license/2230003476\_00aa33333333.lic

Check server: /opt/flexlm/license/2230002222\_00bb19466101.lic

License String	Count	License Server	Expir. Date	Server Hostid	Renew	Order
xpressdata_SOC	1	/opt/flexlm/license	31-jan-2009	00aa33333333	Yes	22200
Analog_E9722B_Src_2_4	1	/opt/flexlm/license	31-jan-2009	00aa33333333	Yes	22300
Analog_E9722B_Meas_2_4	1	/opt/flexlm/license	31-jan-2009	00aa33333333	Yes	22300
Analog_E9722B_Src_100_200Msps	4	/opt/flexlm/license	31-jan-2009	00aa33333333	Yes	22300

Summary of detected order numbers:

Detected renewable order number: 2220001111

Detected renewable order number: 2230002222

## What to do next

The created license inventory file is required for the license renewal comparison process. For details see [How to execute a comparison](#).